



Rimba Raya
BIODIVERSITY RESERVE
An InfiniteEARTH™ Project



REDD+

Rimba Raya, located in Central Kalimantan in Indonesian Borneo, is the world's largest initiative to protect and preserve High Conservation Value (HCV), tropical lowland peat swamp forests - one of the most highly endangered ecosystems in the world.



InfiniteEARTH helps to generate a sustainable income through the sale of carbon credits



The income is used to develop programs that contribute to community economic growth & well-being



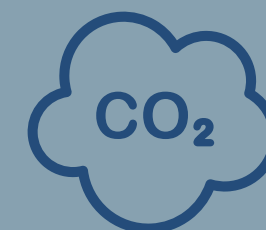
The project forms a critical buffer zone along the Eastern border of the Tanjung Puting National Park in the Seruyan River watershed.



World's first REDD+
Project verified under the SD
VISta standard as
contributing to all 17 UN
SDGs



65,000 hectares
tropical peat swamp



130 million tonnes
avoided carbon emissions



100 IUCN Red
listed animals protected



602 species
of fauna & flora



Solar Power

By providing each household with solar lanterns along with larger solar installations, we are improving the quality of life of all community members



Floating Clinic

The Floating Clinic gives us access to people in the most remote villages, benefiting those with limited resources and mobility. Our Outreach medical services, are particularly beneficial to women, children and the elderly who would otherwise not receive vital medical services. We also provide reading glasses to those in need.



Micro Enterprises

Our micro-financing initiatives support the community and help develop economic stability. The Zuper Shrimp Paste, Chicken Farms & Fish Farms are managed by the women's COOP



Tree Nurseries

All saplings are purchased from local suppliers, giving communities added economic stability.



Education & Literacy

We provide scholarships to high achieving children from low income families and through our Educational Fund, all children receive benefits such as books, stationary, school bags and funding for use in school related activities. Currently we have 2 libraries which provide a learning space for all community members and help develop literacy in the community.



Community Centres

Community Centres provide a neutral space where meetings and educational programs can be held.

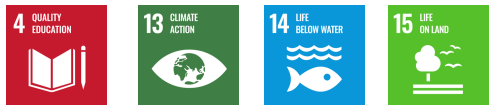
Tree Planting

We've planted over 300,000 trees to date, these trees sequester carbon, keep the air clean and produce fruits for people and animals in our concession. The forest within the project area is regularly monitored and effective firefighting is a priority.



Mangrove Reforestation

Since 2018, we have planted 50,000 mangrove saplings. Our hope is to create a a stable marine habitat.



Clean Water

For a community that lives on the banks of the Seruyan River and use it for everything from fishing to drinking to bathing, it was vital to ensure the availability of clean water. By providing water filters to every house and installing 3 large water filtration systems, we help to ensure the health and well-being of our community



Seruyan River

Several Seruyan River clean-up programs have been conducted. These serve as a means to educate all stakeholders on collective and individual responsibility to keep the environment clean and that in doing so, water quality will improve which will positively impact their quality of life.

Partnerships

InfiniteEARTH and the Rimba Raya Biodiversity Reserve work closely with various stakeholders to protect and preserve Bornean Orangutans, an iconic and endangered species, through the ongoing financial support of Orangutan Foundation International and a strong partnership with Tanjung Puting National Park



Verified as meeting all 17 SDGs

The Rimba Raya Biodiversity Reserve continues to work towards the sustainable development of the project area while ensuring that initiatives introduced are in line with all 17 of the United Nations SDGs.

